

RAIL INITIATIVE GAINING SUPPORT FOR KATRINA VICTIMS

Nepean Kiwanis partners with OCR, CN and Rideau Bulk

The Nepean Kiwanis and OCR, CN and Rideau Bulk initiative is gaining traction across the Ottawa area.

“We’re getting a lot of interest from local businesses in particular,” says Nepean Kiwanis member Chris Maziarski. “Many companies are ready to provide what they can and some are donating cash to we can purchase needed items.”

“With the numerous weather related and natural disasters this past year, we felt we were in the best position to bring aid to those in Mississippi and Louisiana – who are still in need of many items. Transportation logistics and costs are a usual stumbling block, but CN and OCR have really helped out.”

As items are gathered, they are being stored in special vans through the cooperation of Rideau Bulk at the OCR Walkley Yard facility. Packing and loading will commence immediately prior to move-out. “All items must be carefully identified with description and identification,” says Mr. Maziarski.

Needed goods include everything from blankets, sleeping bags and building materials to non perishable food products.

See INITIATIVE on Page 9

Getting a “bearing” on a not-so-‘hot’ day!



The Good News - It was a normal day in Sharon Springs, KS when a Union Pacific crew boarded a loaded coal train to head on the long trek back to Salina.

The Bad News - Just a few miles into the trip a wheel bearing becomes overheated and melts off letting the truck support drop down and grind on top of the rail creating white hot molten metal droppings to spew downward on the rail.

The Good News - A very alert crew noticed a small amount of smoke about halfway back in the train and immediately stopped the train in compliance with the rules.

The Bad News - The train just happened to stop with the hot wheel on top of a wooden bridge built with creosote ties and trusses.



OCR Spotlight

Polymeric Resources Corporation Acquires Arnprior plant

In a November 1st announcement, a long-time upper Ottawa Valley polymer and fibre plant owned by Honeywell Nylon Canada Incorporated has been purchased by U.S. based Polymeric Resources Corporation (PRC).

The Wayne, New Jersey based company is a manufacturer of polymers, nylon compounds, custom resins and engineered plastics.

Continued on Page 7

Inside this issue of The Spareboard:

- NEW! Employee Handbook Pg 2
- OCR Inspection Tracker Pg 2
- OCR Safety Rule Pg 2
- “Backtrack” Pg 3
- From The Dining Car Pg 3
- Birthdays/Anniversaries Pg 3
- Fern’s Rule of the Month Pg 4
- Performance Indicators Pg 5&6
- Incidents/Accidents Pg 7
- NEW! Observations Monitor Pg 8&9
- From The Corner Office Pg 10

Darn good thing he didn’t get Rudolph!!

See Page 10!

OCR INSPECTION TRACKER (Summer and Fall, 2005)

Inspections of the property and Subdivisions that OCR operates on were carried out as follows.

On **June 30th**, Jerry Kelly and Bernie Seguin went to Honeywell on the Renfrew sub. All was good, except that there were some weeds around the tracks close to the rail, Honeywell was notified about it and have since taken care of the matter. They also checked the yards at Portage du Fort and Walkley, along with Bakermet, Eaglebrook and Ritchie Feed and Seed and found all to be safe.

Serge Beauchamp and Sean Gill patrolled the Vankleek and L'Original Subs looking for unsafe conditions and all was found to be safe.

Serge Beauchamps and Wayne Brohart patrolled the Beachburg and Renfrew Subs and all was found to be safe.

On **October 18th**, Luc Larose and Jerry Kelly inspected Kott Lumber and Synagri on the Smiths Falls Sub and all was found safe.

On **October 27th**, Luc Larose and Mike Ritarose did inspections on the Alexandria Sub and found a couple of safety issues at Maxville which have been addressed above. The derail at Glen Robertson was found to be in need of a fresh coat of yellow paint. Both De Beaujeu and Coteau were found to be safe.

On **October 27th**, Jerry Kelly and Bernie Seguin did inspections of all the customer tracks at Pembroke and found debris close to the track at L-310. Also noted was brush was too close to the track on the north side at Pembco Steel, L-375. All other areas checked out safe.



Excerpts from **The Employee Handbook** (Ottawa Central Railway)

By Laurent Caron



Section: Selection and Career Management
Subject: Employment Equity Policy

Section No.: 2-5
Effective: 02/1/05

Employment Equity

The Quebec Railway Corporation (QRC) and its subsidiaries are committed to providing equal opportunities of employment to all individuals regardless of race, creed, colour, age, sex, sexual orientation, marital status, family status, ethnic origin, nationality, ancestry, place of origin or handicap as per the relevant provincial and federal acts and codes, and the provision of collective agreements where applicable.

QRC is also committed to achieving and maintaining a workforce representative of the communities in which it operates as well as a fair workplace for all employees.

See HANDBOOK on Page 5

OCR Safety Rule!

Richard Myre selected
CROR Rule 2 – Watches
as the Safety Rule Of The Month.*

2. WATCHES

Every conductor, locomotive engineer, trainman, pilot, foreman, snow plow foreman and such other employees as the company may direct, shall, when on duty, use a railway approved watch and shall;

- (i) be responsible to ensure that it is kept in proper working condition so that it does not reflect a variation of more than thirty seconds in a twenty-four hour period;
- (ii) set it to reflect the correct time if it reflects a variation of more than thirty seconds;
- (iii) not regulate its movement.

CN System Special Instruction

(iv) An approved watch is one that is reliable and indicates hours, minutes and seconds. Hour factor must be indicated in numerals, e.g. 1,2,3, or I, II, III, IV. Minutes and seconds must be displayed as numerals or by the use of "tick" marks. A date indicator on the watch face eliminating a number e.g. 3 is also approved for service.



OCR's
Richard Myre

* An OCR employee is picked at random each month to select a "Safety Rule".

backtrack

Ottawa Electric Railway

By the time Bytown became Ottawa in 1855, tremendous growth was underway in the young Capital. More government workers prompted a need for organized transit services.

In 1866, the Ottawa City Passenger Railway (OCPR) was incorporated. In 1870, the OCPR had one line between New Edinburgh and the Chaudiere Falls with a fleet of horse-drawn streetcars. They ruled the roadways for 20 years.

Thomas Ahearn was born in Ottawa's Lebreton Flats in 1855. A gifted entrepreneur and inventor, Ahearn was hired to handle Ottawa's new Bell operation and subsequent switchboard installations in the Parliament buildings. A partnership ultimately evolved with American Warren Soper who was employed by the Dominion Telegraph company.

With the incorporation of the Ottawa Electric Light Company in 1885, Ahearn and Soper aggressively bought up smaller electrical businesses under the banner of the Ottawa Electric Company.

When a Toronto group, interested in developing new electrical streetcar services reneged on a performance bond, Ahearn and Soper jumped in, submitted the bond and the Ottawa Electric Railway was born. The first streetcar was on the streets in late June, 1891. The OCPR was soon absorbed by the OER.

Buses were added on a test basis in 1924 and became a permanent fixture on Ottawa streets in 1939.

See OER pg 4

Happy Birthday !!!

George Brohart
Lavern Brohart
Devon Moore
Phil Perrier



and Happy Anniversary!!!

7 Years -

Serge Beauchamp
Angele Brisson
Wayne Brohart
Luc Larose
Roch Martin
Mike Ritarose
Claude Talbot
Cyril Wolfe

5 Years -

Richard Myre

...from all your
friends at Ottawa
Central Railway!!

QUICK TASTE from the "Dining Car"

Fast & Tasty "Italian Tomato & Cucumber Salad"

Salad

- 2 TOMATOES (Italian, Plum, Garden, etc. (sliced)
- 1 (Large) or 2 (small) CUCUMBERS (Peeled and sliced)

Dressing

- | | | |
|-----|-------------|--------------------------------------|
| 2 | Tablespoons | PARSLEY* (Dried or fresh chopped) |
| 1 | Tablespoon | BALSAMIC <u>or</u> RED WINE VINEGAR |
| 1 | Large | Minced (pressed) GARLIC CLOVE |
| 1 | Teaspoon | DIJON MUSTARD |
| 1/2 | Teaspoon | SALT |
| 1/4 | Teaspoon | PEPPER |
| 1/4 | Cup | OIL (Becel or Extra light olive oil) |

- Mix ingredients together in a dish using only one (*) tablespoon of parsley. The second tablespoon will be used to garnish.
- Creatively arrange the sliced tomatoes and cucumbers on a serving plate (tomatoes layered around the outside; cucumbers in the centre portion of the plate)
- Lightly pour the Salad Dressing mixture over the tomatoes and cucumber and sprinkle with remaining parsley.

“Backtrack”

OER Continued from Pg 3

Ahearn and Soper built streetcars for a number of North American cities during the early twentieth century from their Ottawa Car Company.

In 1948, the City of Ottawa took over transit operations from the OER under the banner *Ottawa Transportation Commission*. Streetcars and buses shared the streets until a late 1950s consultant’s report suggested the city should revert to an all bus operation.

On April 30th, 1959, the last streetcar pulled into the Cobourg Barn; it was the end of an era. A month later, the city’s fleet of ten Brill trolley buses was also retired. OC Transpo succeeded the OTC in 1972. Streetcar 696, built in Ottawa in 1917 and retired in 1957 is currently undergoing restoration at OC Transpo facilities.



Photo: OC Transpo/City of Ottawa Archives

OER/OTC Streetcar 696 prior to its 1957 retirement.

Support the restoration of 696

The 2006
“Streetcar History Calendar”
Is now available

Visit www.octranspo.com and click on
“Streetcar696” for restoration and
contact information



A train receives permission from a foreman to proceed through his limits between mile 10 and mile 20 Able Sub with no restrictions. The foreman follows the train with the track unit from mile 10 towards mile 20 Able Sub. A small spur is located at mile 15 Able sub which services a customer.

Question:

Must the foreman communicate with the train before passing mile 15.

Answer:

Yes. The foreman must ensure that the train remains ahead of him. The train could have entered the spur with his entire train and be away from the main track.

The Spareboard coordinator produces “Cheer” on CFRA

OCR Spareboard coordinator and long-time Ottawa broadcaster Dave Watts will again this year coordinate and direct the “Christmas Cheer Broadcast on CFRA.”

This is the 55th year of the fundraiser radiothon featuring celebrity guests and CHUM Ottawa radio personalities reading listeners’ pledges and sharing in 9 hours of music and fun.

Funds raised from the “Christmas Cheer Broadcast on CFRA” and the companion “Christmas Cheer Breakfast” will be administered by the Christmas Exchange for the preparation of food hampers and vouchers for those in need in the Ottawa area.

The *Christmas Cheer Broadcast* airs



Saturday, December 3 from 10:00AM to 7:00PM on AM 580 CFRA and the *Christmas Cheer Breakfast* is slated for 7:00AM to 8:30AM on Friday, December 9 at the Westin Hotel.

Pledges can be made by calling (613) 738-CFRA (2372) during the Broadcast December 3.

Information and tickets for the “Breakfast”, one of the city’s premier business networking events, are available by calling Tiffany Barbosa at Ottawa’s Westin Hotel.

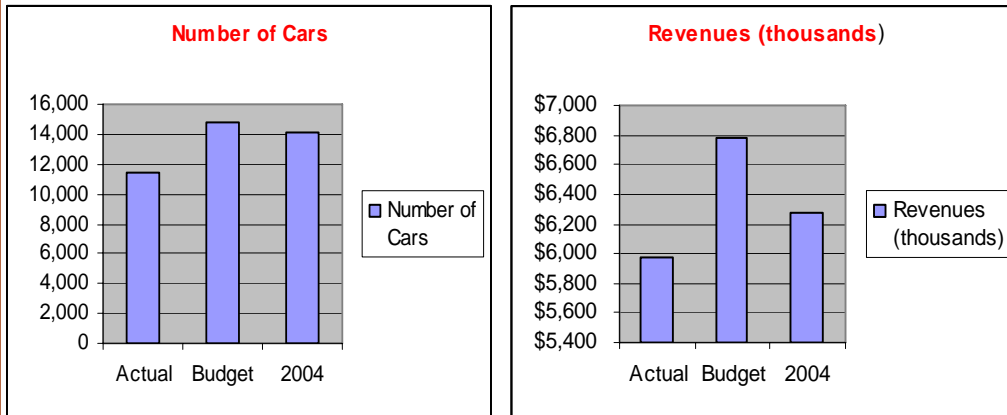
Performance Indicators (October)



Our Mission:

To be our customer's preferred supplier of transportation logistics services to help them meet the needs of their own customers.

Basis of the Mission: To make a significant contribution to our customer's commercial success by providing safe, efficient and cost effective transportation logistics services.



Stopping The Flu In Its Tracks!

A high fever, muscle aches, extreme fatigue or exhaustion, coughing, congestion and a sore throat... the symptoms of influenza or "the flu" are generally more serious than the common cold. It weakens the immune system and can lead to major health complications.

The flu is highly contagious. When a person with the flu coughs or sneezes, infected droplets are expelled into the air and remain suspended there, exposing everyone in the vicinity.

An ounce of prevention!

1) **Get a flu shot every year!** This is especially important for those working with the public. Flu shots have been shown to be 70 to 90% effective in healthy adults.

2) **Tried and true flu prevention – "hand washing"!** Keeping a bottle of no-rinse, antibacterial hand sanitizer near your work area is always a good idea. If you are coughing or sneezing, get back into the habit of covering your mouth to avoid infecting those around you.

If you do come down with the flu, drink lots of fluids and get plenty of rest. There are many over the counter flu remedies on the market for aches and fever.

(Keeping your health InSight, view this health capsule in its entirety on the SSQ web site at :

www.ssq.ca/liste_de_diffusion/capsule_novembre_2005.pdf

HANDBOOK continued from Page 2

QRC will initiate employment equity measures to help promote the participation and advancement of groups which have traditionally been under-represented including women, native people, persons with disabilities and visible minorities.

QRC will undertake to identify and remove any discriminatory barriers (systemic or otherwise) to the selection, hiring, promotion and training of members of the designated groups (as set out in paragraph two) and will make reasonable accommodations to enable members of such groups to compete with others on an equitable basis.

QRC, in exercising its responsibility as an employer, endeavours at all times to foster an environment that is supportive of productivity, professional development, dignity and self-esteem of every employee. In addition, all QRC employees are responsible for the encouragement of behaviour, language and attitudes which will create a favourable business environment, free of discriminatory actions and stereotyping.

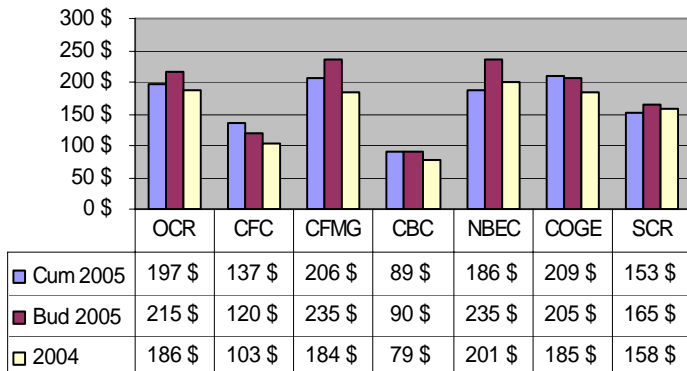
Each General Manager or Department head is responsible for the application of this policy.

For additional information on employment equity, employees may contact the Human Resources department.

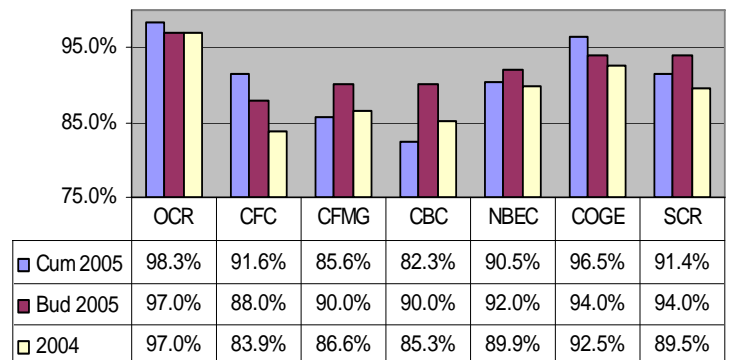
Performance Indicators (October)



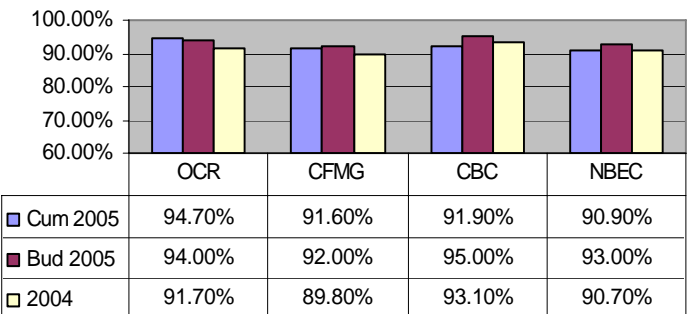
Actual Fret revenues/employee (000 \$)



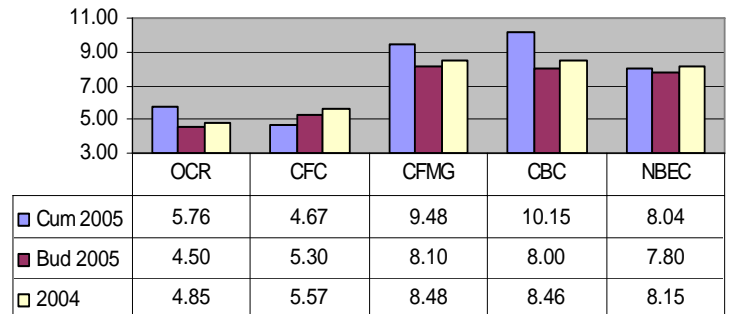
Attendance



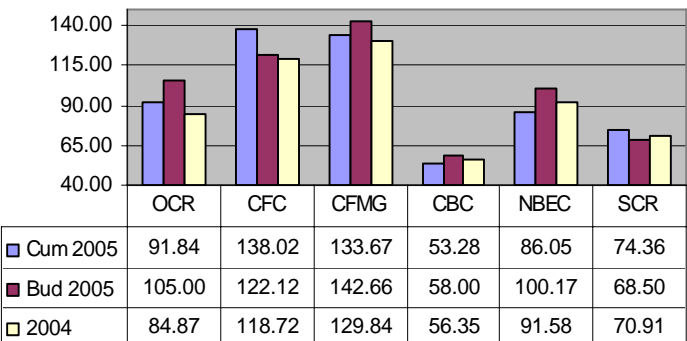
**Weekly Car Placements
(%Placed / Garanteed)**



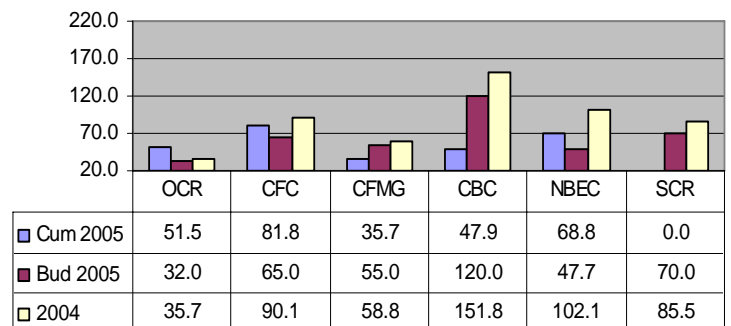
**Car cycle
(Days (empty-load))**



Fuel Consumption (GTM/litre)



**Ratio - Train Accidents
(# Accidents / Train mile) X 1M**





Ottawa Central Railway 2005 Incidents/Accidents through October

	Oct 2005	Oct 2004	FINAL 2004	FINAL 2003	FINAL 2002	FINAL 2001		Oct 2005	TOTAL 2004	TOTAL 2003	TOTAL 2002	TOTAL 2001
Main Track Accidents*	4	0	0	2	0	1						
Non-Main Track Accidents*	7	8	9	11	6	8	Human Factor	2	3	5	3	4
							Ice & Snow	0	0	0	1	1
Crossing Accidents	1	2	2	2	4	2	Track Conditions	0	1	0	1	1
Trespassing Incidents	0	0	1	0	1	5	Vandalism	0	0	0	0	1
Employee Injuries*	3	2	2	5	8	0	Equipment	0	0	0	0	0
							3rd Party	5	5	6	1	1
Cardinal Rule Violations	1	0	0	0	0	2	Other	0	0	0	0	0
								7	9	11	6	8
Hyrail Accidents	0	1	1	0	0	0						
Vehicule Accidents	1	1	1	1	0	1						
TOTAL	17	14	15	21	19	19						
Other	7	18	20	13	12	0						

*A tip of the OCR hat to Luc Larose!
The following email was received
November 9th*

-----Original Message-----

From: Defrid Theoret
[mailto:DTheoret@ivacorm.com]
Sent: November 9, 2005 8:47 AM
To: Luc Larose
Cc: Mike Downey; James Allen
Subject: Yesterday's switch....

Morning Luc;

Due to our present situation...On behalf of Ivaco we would like to THANK YOU !!! for the requested early switch yesterday.

Best Regard,

Defrid Theoret,
Freight Coordinator,
IVACO ROLLING MILLS (2004)
LP

PRC Continued from Page 1

PRC primarily recycles and upgrades engineering plastic by-products into nylon and other polymer plastic compounds for use by manufacturers. It's the primary material for producing injection moulded or extruded plastic products.

The company and its subsidiaries have also entered into a related agreement with Honeywell Nylon LLC which will provide it with long-term source of supply of caprolactam, the plant's primary raw material.

The new name for the Arnprior facility is "Nylene Canada Inc." Prior to Honeywell, the plant was owned by BASF.

Ottawa Central Railway is pleased to "welcome aboard" Nylene Canada Incorporated.

*Interested in assisting
with the
Kiwanis Christmas
Car
to Katrina Victims?*

For additional information on how you might be able to lend a hand with this initiative, please contact

Chris Maziariski

Phone: 957-2622

Or by email

maziarski.chris@infrastructure.gc.ca





SUPERVISORS' OBSERVATIONS TO ENSURE ONGOING SAFETY AND COMPLIANCE



Left to right, OCR's Jerry Kelly, Luc Larose and Serge Beauchamp

Covers track department and transportation

As part of the Ottawa Central Railway Supervisors duties, employees are to be observed while performing their day to day tasks to ensure they are working safely and in accordance with their specific operating rules.

For running trade employees this is sometimes done while riding a train or observing a job briefing, and sometimes hidden observations are used where a crew is not aware they are being observed on things like radio communications, blowing a crossing, riding equipment etc.

The same type of observations are conducted on track maintenance employees with regard to their safety and specific operating rules.

When unsafe practices are observed or a rule is not being executed properly, the train crew and/or track employee or employees will immediately be informed about the non-compliance.

This information is recorded and a monthly log is generated where the total number of observations of each employee is listed.

This information is kept on hand and is used as a reference to monitor the individual's progress. For instance if a Supervisor finds there is a non compliance he/she can refer to the logged information and find if an individual has had a previous infraction regarding a rule or safety issue.

As part of "The Spareboard", individual stats on the number of observations an employee has been subject to will, from time to time be published, however this will not reflect whether or not an infraction has occurred.

MONTHLY OBSERVATIONS PER EMPLOYEE FOR 2005 (OCR Track Department)

Track employees	Jan	Feb	Mar	Apr	May	June	July	Aug	Sept	Oct	Nov	Dec	Total YTD
Benoit Beauchamps	9	1	1	1	1	1	1	2	2	1			20
Serge Beauchamp													0
Georges Brohart	7	1	1	2	1	1	1	1	2	1			18
Lavern Brohart	7	1	1	1	1	1	1	1	2	1			17
Wayne Brohart	9	3	1	2	1	1	1	1	1	1			21
Sean Gill	11	1	1	1	1	1	1	1	2	2			22
Vincent Mayhew	10	1	1	1	1	1	1	1	2	1			20
Richard Myre	11	1	1	1	1	1	1	2	2	1			22
Cyril Wolfe	10	1	1	1	1	1	1	1	2	1			20
Contrator				6	10		1	6	3	2			28
X-Rail	1	1	1		1	1	1	1	1	1			9
Transp.employees									8				8
Monthly Totals	75	11	9	16	19	9	10	17	27	12	0	0	205

Transportation – Monthly Observations, Page 9

TRANSPORTATION - MONTHLY OBSERVATIONS PER EMPLOYEE FOR 2005

Employee	Jan	Feb	Mar	Apr	May	Jun	Jul	Aug	Sep	Oct	Nov	Dec	Total YTD
Belliveau P	6	9		19									34
Brisson A	21	8	31	9	0	6	2	12	16	5			110
Brown M	1												1
Campbell B	9	6	9	12	19	16	1	3	19	49			143
Campbell J	26	4	10	12	15	10							77
Campbell Jamie	NA	4	6	8	2	3	1	8	6				38
Gagnon Marc Andre	NA	9	27	23	16	17	2	3	2	8			107
Houle, M	18	2		2	4	5	1	6	22	10			70
Kelly S	NA	9	31	11	2	10	2	0	14	47			126
Krasilycz J	NA	NA	NA	NA		2	2	0	0	1			5
Laing J	33	9	11	8	1	10	3	8	13	8			104
Martin R	43	4	10	6	8	4	0	0	13	4			92
McRae B	9	6	13	9	0	13	2	0	16	3			71
Perrier P		7	8	9	4	6	1	6	14	4			59
Proulx N	22	9	27	19									77
Ritarose M	3	7	4	8	4	6	3	8	13	1			57
Robinson P	4	9	6	8	2	5	0	8	13	19			74
Rushton R													0
Seguin B	3	7	4	23	8	10	2	0	17	8			82
St-Pierre E	12	10	2	8	7	4	1	0					44
Talbot C	6	9		8	8	13	1	0	11	4			60
Trempe, R		9	10	8	4	5	0	8	7				51
TRACK													0
RIDEAU BULK	1		1	1	2	3	1						9
CONTRACTOR		8											8
3rd PARTY			2										2
Totals	217	145	212	211	106	148	25	70	196	171	0	0	1501

INITIATIVE continued from Page 1

“We can’t accept beef products or food with beef in them, he says.

“We’re still shooting for an early December move out date,” says Mr. Maziarski.

“We just want to make sure every cubic foot of cargo space in occupied.”

When it’s ready to go, the boxcar will be moved by OCR to a CN connection point, then to Chicago and south to Moss Point, Mississippi.

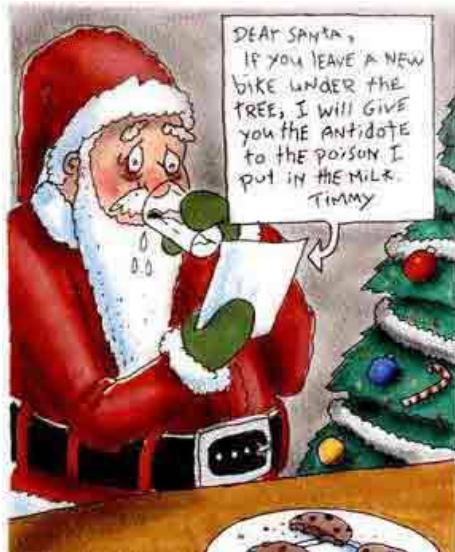
The car will be unloaded by local Kiwanis who will also handle distribution.

**You can help too!
See page 7**



Serge Beauchamp displays his prize catch this fall.

Congratulations Serge!



Best wishes for a happy and safe holiday season to the entire OCR team



7 Holiday Eating Tips.

1. **Avoid carrot sticks.** Anyone who puts carrots on a holiday buffet table knows nothing of the Christmas spirit. Go next door, where they're serving rum balls.
2. **Drink as much eggnog as you can – and quickly!** Like fine single-malt scotch, it's rare. In fact, it's even rarer than single-malt scotch. You can't find it any other time of year but now. So drink up!
3. **Mashed potatoes,** always ask if they're made with skim milk or whole milk. If it's skim, pass. Why bother? It's like buying a sports car with an automatic transmission.
4. **Do not have a snack before going to a party.** The whole point of going to a Christmas party is to eat other people's food for free. Lots of it. Hello?
5. **Under no circumstances should you exercise between now and New Year's.** You can do that in January when you have nothing else to do. This is the time for long naps, which you'll need after circling the buffet table while carrying a 10-pound plate of food and that vat of eggnog.
6. **Fruitcake?** Granted, it's loaded with the mandatory celebratory calories, but avoid it at all cost. I mean, have some standards.
7. **At the buffet table,** if something is really good, position yourself in front of the serving plate and don't budge. Don't let anyone else near or they'll be gone till next year.

Have an amazing Yule!

The Spareboard

Published by
Ottawa Central Railway
3141 Albion Road South, Ottawa
(613) 260-9669
For general comments and story ideas
contact, Dave Watts
dw-dohn@hotmail.com

From

"The Corner office"

By James Allen

October Revenues were a disappointing \$256K below Budget. The strike at Ivaco had an impact of \$142K! Our overall level of expenditures in the month were lower by \$94K.

We did service Ivaco once or twice a week and there is optimism they will roll product 5 days a week commencing in late November or early December. No signal yet when both sides will return to the bargaining table.

We continue to accumulate bills for the clean-up in Maxville and the Ministry of the Environment wants ongoing sampling of the groundwater in the spill area. The books are not yet closed on this matter.

Speaking of the MOE, the 2 former employees involved in the May incident were to appear in the Alexandria Courthouse on November 14th and while no charges were read, both gentlemen were requested to appear again on December 12th.

Glad to see the ratio of accidents to train miles is declining....let us all keep our "eye on the ball" and make every day a "safe day".

James Allen