

WALKLEY YARD TOP CONSIDERATION FOR LIGHT RAIL SERVICING AND STORAGE

Community group recommends Walkley as top choice



Photo: OCR

Walkley Yard celebrated 50 years continuous service in 2005

As the overall construction timetable continues to move forward, the Walkley Yard is being touted as an ideal storage and maintenance facility for Ottawa's light rail service.

The provincial Ministry of the Environment told the City of Ottawa to form a community group to look at the merits of three possible locations.

As reported in Randall Denley's April 11th commentary in the *Ottawa Citizen*, the group's recommendations have been submitted and the Walkley Yard tops the list.

The City's top choice was a site near Emerald Woods, and its second suggestion is a tract of airport-owned land near Bowesville Road.

Meanwhile, as site considerations were underway by the committee, it was announced that the City had struck a deal with the airport authority on the Bowesville Road site.

However, the city maintained the deal was meant as an alternative.

The Walkley Yard is a 40-acre parcel owned by CP Rail. The yard facility celebrated its 50th year of service in 2005. It was a key ingredient in the process of removing railways from the downtown core in the late 50s and 60s.

Currently, the yard is home to Ottawa Central Railway and contains a storage facility for the O-train.

BRIDGE DAMAGE ON RENFREW SUB REPAIRED IN 2.5 DAYS!

There were no injuries Wednesday, April 12, when a semi-trailer dislodged bridge infrastructure at M.P. 5.2 on the Renfrew Sub.

The impact shifted the structure some eight inches. Dismantled and rebuilt, the repair work took just 2.5 days and was handled by Group Sema under the direction of Rock Morel.

M.P. 5.2 on the Renfrew Sub runs over the Huntmar Road just east of Carp.

See Bridge Photos on Page 2



Jerry Kelly Photo

Group Sema and OCR's Serge Beauchamp handled repairs to the bridge at MP 5.2 on the Renfrew Sub.

Inside this issue of *The Spareboard*:

- OCR Safety Rule Pg 2
- Fern's Rule of the Month Pg 2
- Birthdays/Anniversaries Pg 2
- "Backtrack" Pg 3
- From The Dining Car Pg 3
- Incidents/Accidents Pg 4
- Performance Indicators Pg 5 & 6
- From The Corner Office Pg 6



115. PUSHING EQUIPMENT

(a) When equipment is pushed by an engine, a crew member must be on the leading car or on the ground, in a position to observe the track to be used and to give signals or instructions necessary to control the movement.

EXCEPTION: A crew member need not be so positioned when the portion of the track to be used is seen or known to be clear. However, the movement must not approach to within 100 feet of any public, private or farm crossing unless such crossings are protected as described in Rule 103 paragraph (b) or (g).

(b) On MAIN TRACK, when equipment is pushed by an engine, unless protected by a crew member as described in paragraph (a), the movement must:

- (i) NOT be made while the leading car is within yard limits or cautionary limits;
- (ii) NOT exceed the overall length of the equipment; and
- (iii) NOT exceed 15 MPH.

SPECIAL INSTRUCTION – Rule 115

1. Seen or Known to be Clear – is defined as seeing the portion of the track to be used as being clear and remaining clear of equipment and as having sufficient room to contain equipment being pushed. This determination must be made by a crew member, yard supervisor or other qualified employee who can observe the track and has radio contact with the employee controlling the movement. Where a track that has been seen to be clear, and no access to that track is possible by another movement, the track may be considered as "known to be clear".

Note: When it can be determined that other movements are not on duty or not performing work in the track to be used, the requirement of "known to be clear" can be considered to be fulfilled continuously.

2. Engines Backing Up – When making a backup movement with an engine consist and visibility is restricted, a member of the crew must be on the leading locomotive in direction of movement and in position from which signals necessary to the movement can be properly given, unless the route is seen or known to be clear.

HAPPY BIRTHDAY!
(May)

Vincent Mayhew
Pat Robinson
Roger Trempe
Cyril Wolfe

ANNIVERSARIES!
(May)
Bill Campbell - 6 Years



**Congratulations from all
your friends at OCR!**



Roy Murray selected the OCR Safety Rule of the Month.

GOI Section 8 Item 12.4
(Paragraph referring to riding equipment on shop tracks)

DO NOT RIDE on the side, top or end of equipment in any main shop, car shop or diesel shop tracks. This restriction applies on all shop tracks inside and outside building facilities.



OCR's
Roy Murray

* An OCR employee is picked at random each month to select a "Safety Rule".

MP 5.2 Renfrew Sub Rail alignment following mishap with semi-trailer (left) and rebuilt overpass less than three days later (right).
(Jerry Kelly Photos)



backtrack

GREAT FIRE OF 1900 DESTROYED A LARGE AMOUNT OF RAILWAY INFRASTRUCTURE

In the latter part of the 19th and into the 20th centuries, many North American cities were plagued with deadly city-wide fires. The Great Chicago fire of 1871, the St. John, New Brunswick fire of 1877 and the Baltimore fire of 1904 are only a few.

It is widely accepted that the Great Ottawa Fire of 1900 began as a chimney fire in Hull in the late afternoon of April 26, 1900. The strong north-westerly winds sent a volley of sparks into the neighborhood; the result was catastrophic.

Leaving much of the city of Hull in ruin, the fire gobbled its way along the wooden Chaudiere Bridge torching J.R. Booth's huge lumber reserves and sawmill and anything else in its path.

In addition to the destruction of homes and businesses, a large amount of railway infrastructure was destroyed. Some 13 cars of the Ottawa and Gatineau, and Pontiac Pacific Junction Railways and 175 Canadian Pacific freight cars valued at \$130,000 were devoured. In addition, The Canadian Pacific Union Station and freight sheds on Lebreton Flats were destroyed.

Canadian Pacific estimated that the value of the destroyed sheds and freight losses exceeded \$70,000. The fire created such a shortage of local lumber that Booth's Canada Atlantic Railway facilities were forced to delay building new freight cars.

As the fire continued a southward swath towards the Dow's Lake area, it consumed nearly 2,000 homes leaving over 8,000 homeless. The death toll stood at seven.

By Dave Watts

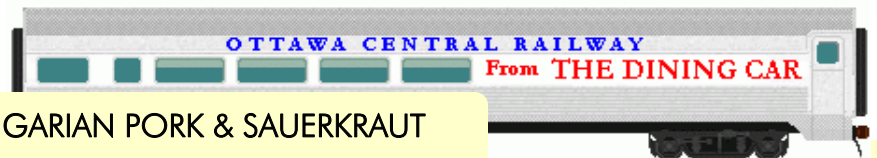
When the smoke finally cleared 24-hours later, the destruction was clear. The rebuilding of Hull and Ottawa

began almost immediately with over 750 new buildings constructed by the end of the year.



April 26, 2006 marks the 106th anniversary of the beginning of the Great Ottawa Fire. The photo at left looks west on Queen Street.

Photo: Library and Archives Canada



HUNGARIAN PORK & SAUERKRAUT

- 2 1-Litre jars of Sauerkraut. Any brand will do.
- 1 48 oz can of Tomato Juice
- 2 lbs (1.5 kg) Boneless Pork (either filet, chops etc)
- 2 small packages of salt pork
- 1 large cooking onion
- 7 or 8 medium potatoes (peeled and cut in half)
- 3 tbls Paprika
- Salt & Pepper to taste

Method

- Cut the back rind off the salt pork, and cut salted pork into several smaller pieces
- Place pork chops or filet into the bottom of a roasting pan, add the pieces of salted pork
- Drain both jars of sauerkraut (suggest dump into a pasta strainer and drain off the juice)
- Pour the sauerkraut over the pork and spread around with a fork
- Slice the onion and sprinkle over the sauerkraut
- Spread the potatoes in the pan in and around the sauerkraut and pork
- Pour in the full can of tomato juice
- Sprinkle the Paprika over everything
- Cover, and cook in a 375 F oven for about 90 minutes, or until the meat is cooked through

Serve with crusted bread. Serves about 6 to 8.

(Remaining portions can be refrigerated and warmed up next day in a saucepan or microwave)

Ottawa Central Railway
2006 Incidents/Accidents through March



	Mar 2006	Mar 2005	FINAL 2005	FINAL 2004	FINAL 2003	FINAL 2002	FINAL 2001		Mar 2006	TOTAL 2005	TOTAL 2004	TOTAL 2003	TOTAL 2002	TOTAL 2001
Main Track Accidents*	0	1	4	0	2	0	1							
Non-Main Track Accidents*	3	4	10	9	11	6	8	Human Factor	0	4	3	5	3	4
								Ice & Snow	1	0	0	0	1	1
Crossing Accidents	0	0	1	2	2	4	2	Track Conditions	0	1	1	0	1	1
								Vandalism	0	0	0	0	0	1
Trespassing Incidents	0	0	0	1	0	1	5	Equipment	0	0	0	0	0	0
								3rd Party	2	5	5	6	1	1
Employee Injuries*	0	1	3	2	5	8	0	Other	0	0	0	0	0	0
									3	10	9	11	6	8
Cardinal Rule Violations	0	0	1	0	0	0	2							
Hyrrail Accidents	0	0	0	1	0	0	0							
Vehicle Accidents	0	0	1	1	1	0	1							
TOTAL	3	6	20	15	21	19	19							
Other	1	3	8	20	13	12	0							

Back again!!
DID YOU KNOW, THAT...

1. 315 entries in Webster's 1996 Dictionary were misspelled!
2. On average, 12 newborns will be given to the wrong parents, daily.
3. 40% of McDonald's profits come from the sales of Happy Meals!
4. Warren Beatty and Shirley MacLaine are brother and sister.

“Operation Double ‘O’” Follow-up

In January, the joint exercise “Operation Double O” table-top and real-life training exercise for emergency response teams took place.

On April 20, a follow-up session included brake systems operations and practice lifting a box car. Jerry Kelly, Malcolm Dobie and Ian McCord represented OCR while Ottawa Fire Chief of Special Operations Kim Ayotte and a team from Station #12 on Fifth Avenue joined in.

Photo:
Wally Weart



Performance Indicators



March, 2006

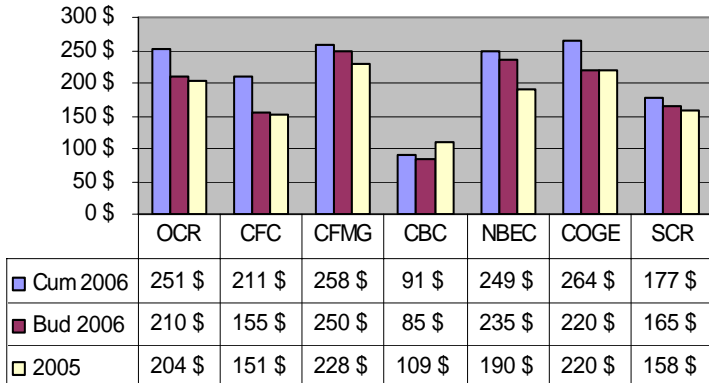
Our Mission:

To be our customer's preferred supplier of transportation logistics services to help them meet the needs of their own customers.

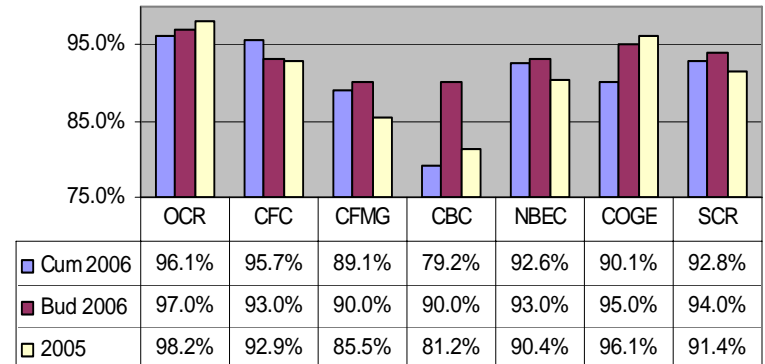
Basis of the Mission:

To make a significant contribution to our customer's commercial success by providing safe, efficient and cost-effective transportation logistics services.

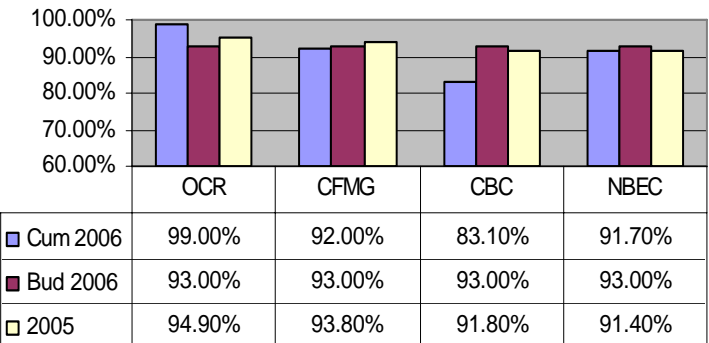
Actual Fret revenue/employee (000 \$)



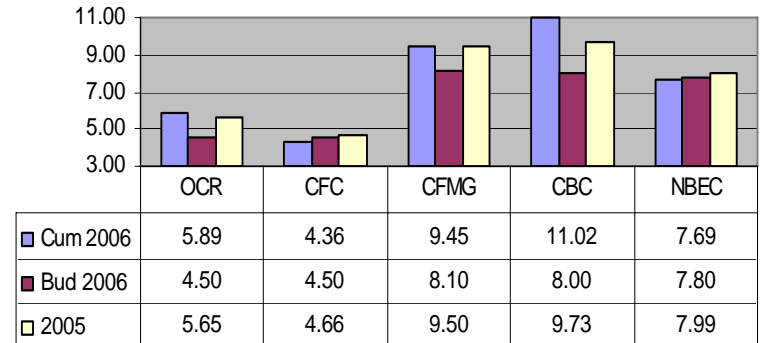
Attendance



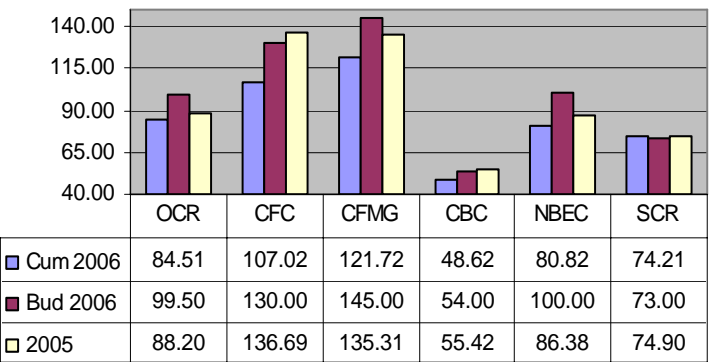
**Weekly Car Placements
(%Placed / Guaranteed)**



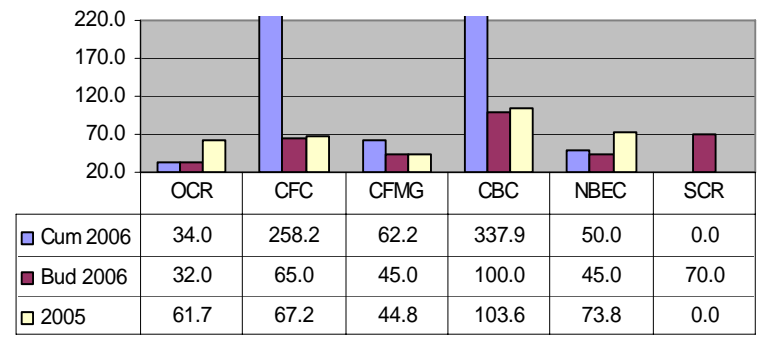
**Car cycle
(Days (empty-load))**



Fuel Consumption (GTM/litre)



**Ratio - Train Accidents
(# Accidents / Train mile) X 1M**



OCR Supports 'Food Aid' at Lowell Green Roast

Ottawa Central Railway provided a day-long cab ride as a Silent Auction item at the "Lowell Green Roast" Thursday, April 20.

The 'Roast' celebrated Lowell Green's 50 years of broadcasting (46 years at Ottawa's 580 CFRA). Mr. Green's dedication to numerous regional and national causes was acknowledged. Celebrity 'roasters' included CTV's Mike Duffy, JJ Clarke and former CFRA Vice President and General Manager, Terry Kiely.

Food Aid is an Ottawa Food Bank initiative to purchase beef in order to feed the hungry. Every dollar donated is used to buy and process beef from Ottawa area farmers. The initiative assists the local cattle market while adding protein to the diets of those in need.

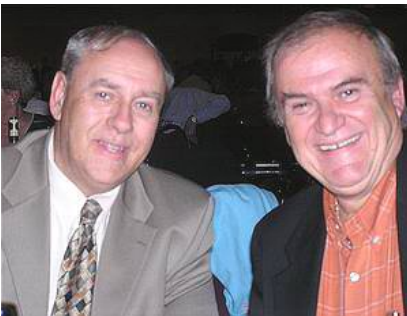


Photo: Ray Stone
OCR's James Allen and "Spareboard's" Dave Watts at the Lowell Green roast.

Grannie's Medicine Cabinet*

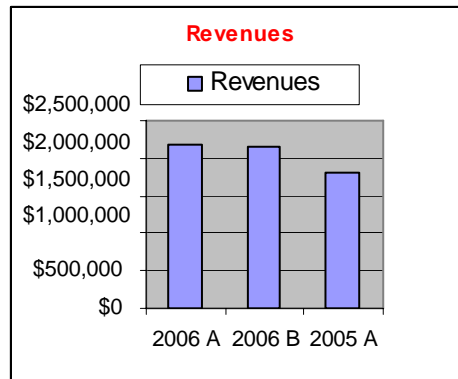
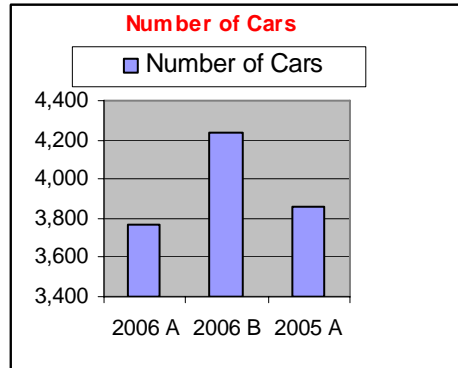
Did you know that drinking two glasses of **Gatorade** can relieve headache pain almost immediately -- without the unpleasant side effects caused by traditional "pain relievers"?

**The above tip may or may not work!
Give it a try!**

**(Claim not necessarily medically proven)*

Performance Indicators

March, 2006 



From

THE CORNER OFFICE

By James Allen

March revenues of \$944K were higher than Budget by \$72K however they included some prior months adjustments. Year-to-date we are 1.1% or \$24K ahead of Plan.

Expenses were on target for the month. The 1st quarter has certainly been much better than both Budget and last year.

The challenge is to keep this momentum going forward.

If we all perform our jobs efficiently, in a safe manner and keep our eyes open for areas

"Inbox" Top Pick!



to reduce waste, I am confident OCR will produce excellent results over the balance of the year.

As always, make every day a safe day.

In the next The Spareboard

- Follow-up on the OCR April 28 Training exercise
- A UV primer and tips for not getting burnt this summer and lots more!

The Spareboard

Published by
Ottawa Central Railway
3141 Albion Road South, Ottawa
(613) 260-9669
For general comments and story ideas contact, Dave Watts
dw-dohn@hotmail.com